



## 樂善堂社區藥房服務

Lok Sin Tong Community Pharmacy Services

九龍城聯合道50號  
滙豪大廈1樓

2361 1308

9723 3717

lstcps@loksintong.org

太子始創中心12樓  
1211-1215室 (A單位)

2338 3718

6155 4928

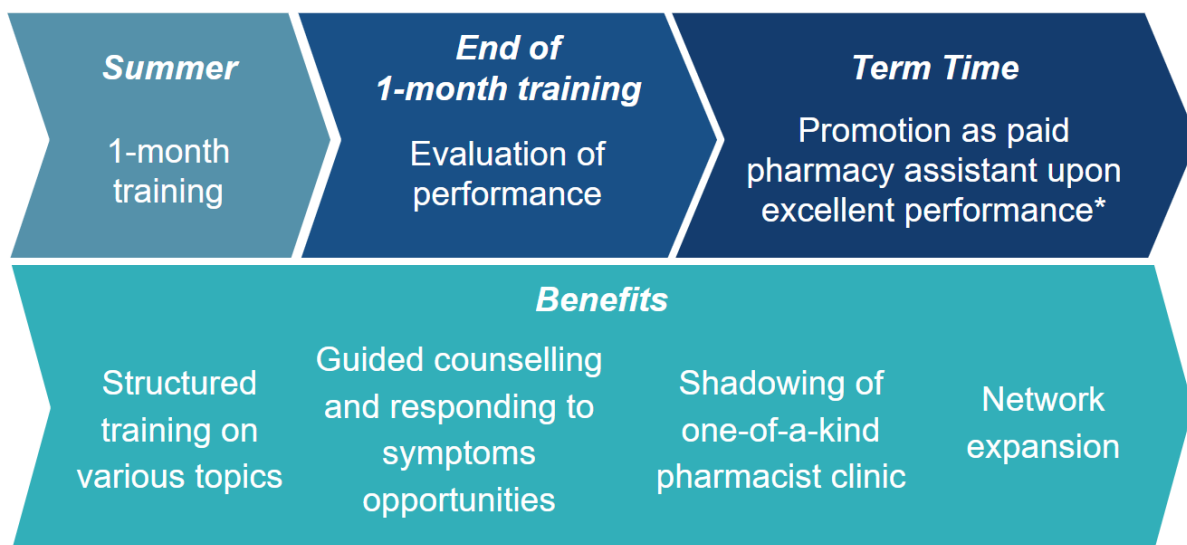
樂善堂社區藥房服務

## Lok Sin Tong Community Pharmacy Services 2025 - 2026 Pharmacy Trainee Programme

Lok Sin Tong Community Pharmacy Services (LSTCPS) aims at strengthening primary care support in the community via the provision of a variety of quality community pharmacy services and affordable medications in a non-profit business model.

Our **Pharmacy Trainee Programme** helps pharmacy students gain thorough insight and develop essential skills in NGO community pharmacy services way in advance of their graduation to become competent pharmacists.

### Programme Structure



\* At least one year of commitment. Negotiable working dates, especially during exam period.

### Training Schedule

Please see the following link for our tentative training schedule.

<https://lstcps.hk/news/detail/14/>



## 樂善堂社區藥房服務

Lok Sin Tong Community Pharmacy Services



九龍城聯合道50號  
滙豪大廈1樓



2361 1308



9723 3717



lstcps@loksintong.org



太子始創中心12樓  
1211-1215室 (A單位)



2338 3718



6155 4928



樂善堂社區藥房服務

### Requirements

- Passionate pharmacy students from **Year 1 – 4** who are eager to learn and take up challenges
- Conscientious, vigilant, responsible, proactive and well-organised
- Good command of written and spoken Chinese and English
- Proficient in Microsoft Office (Word, PowerPoint, Excel)
- Interested in working in the **community setting** in the future

### Dates & Workplace

Batch	Proposed Dates (Negotiable)	No. of vacancies
1 <sup>st</sup> Batch	30 <sup>th</sup> May – 30 <sup>th</sup> June 2025	4 students per batch, spread across 3 sites
2 <sup>nd</sup> Batch	2 <sup>nd</sup> July – 31 <sup>st</sup> July 2025	
3 <sup>rd</sup> Batch	1 <sup>st</sup> August – 29 <sup>th</sup> August 2025	

Working hours: Monday to Friday 09:00 - 18:30 (with 1 hour lunch)

Locations (and vacancies per batch):

1. Kowloon City (1): **Lok Sin Tong Community Pharmacy**, 1/F, Luxe Metro, 50 Junction Road, Kowloon City
2. Prince Edward (2): **Lok Sin Tong Mr. & Mrs. Lee Yin Yee Community Pharmacy**, Flat A, 1211-15, 12/F, Pioneer Centre, 750 Nathan Road, Prince Edward, Kowloon
3. Tai Po (1): **PHARM+ Lok Sin Tong Community Pharmacy**, Shop No. 2, G/F, The Golden Gate, 1 Plover Cove Road, Tai Po

A **mandatory** briefing session may be arranged on a Saturday of each preceding month for students of each batch.



## 樂善堂社區藥房服務

Lok Sin Tong Community Pharmacy Services



九龍城聯合道50號  
滙豪大廈1樓



2361 1308



9723 3717



lstcps@loksintong.org



太子始創中心12樓  
1211-1215室 (A單位)



2338 3718



6155 4928



樂善堂社區藥房服務

### Application Timeline

Application close: **5<sup>th</sup>, March 2025** (Wed) 23:59

Please apply via the following Google Form and upload your CV and cover letter.

<https://forms.gle/Kt4sy4RXNNizfDS7A>



Short-listed candidates will be invited for a face-to-face individual interview. You may receive a call **before the interview** to discuss the time and detail.

Date: **14<sup>th</sup> March, 2024 (Fri) or 15<sup>th</sup> March, 2024 (Sat)**

Location: **Lok Sin Tong Mr. & Mrs. Lee Yin Yee Community Pharmacy**  
Flat A, 1211-15, 12/F, Pioneer Centre,  
750 Nathan Road, Prince Edward, Kowloon

Other than well-prepared CV and cover letter, candidates will be selected by pharmacists based on their attitude, sincerity and dedication demonstrated.

Coordinators: Athena Chow (Pharmacist),  
Brayden Chan (Pharmacy Intern)

Our website: <https://www.lstcps.hk/>

Our Facebook: <https://www.facebook.com/LSTCPS>

Thank you.

Mr. Cheng Wai Chung

**Head of Pharmacy Services**

*Lok Sin Tong Community Pharmacy Services (LSTCPS)*